



### Bubba Kush

Sample ID: G1K0234-02

Matrix: Industrial Hemp

Test ID: 5021883

Source ID:

Date Sampled: 11/11/21

Date Accepted: 11/11/21

**Virent Valley Farms**

### Results at a Glance

Total THC : 0.29 %

Total CBD : 14 %

Total CBG : 0.76 %

Percent Moisture : 8.61 % **PASS**



**ISO 17025  
ACCREDITED  
LABORATORY**

Eric Wendt  
Chief Science Officer - 11/16/2021

These results relate only to the sample included on this report. The report may not be reproduced except in full, without the written permission of Green Leaf Lab.

This is for informational testing and is not compliance testing. Lab results apply to the sample as received.



### Bubba Kush

Sample ID: G1K0234-02

Matrix: Industrial Hemp

Test ID: 5021883

Source ID:

Date Sampled: 11/11/21

Date Accepted: 11/11/21

Virent Valley Farms

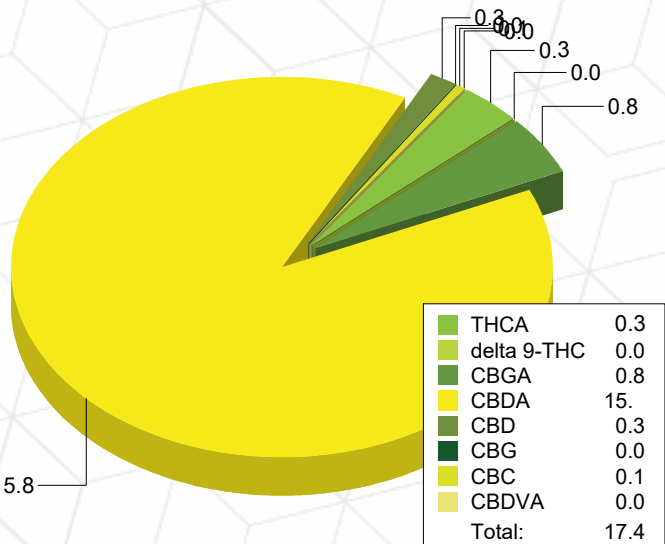
### Potency Analysis

Date/Time Extracted: 11/15/21 13:00

Analysis Method/SOP: 215

Batch Identification: 2147004

	LOQ (%)	% by Wt.	mg/g	Cannabinoids Profile	
Total THC	0.010	0.29	2.9		
Total CBD	0.009	14	140		
Total CBG	0.0009	0.76	7.6		
THCA	0.0005	0.31	6.1		
delta 9-THC	0.0005	0.025	0.25		
delta 8-THC	0.005	< LOQ	< LOQ		
THCV	0.006	< LOQ	< LOQ		
THCVA	0.002	< LOQ	< LOQ		
CBD	0.002	0.28	2.8		
CBDA	0.002	16	160		
CBDV	0.005	< LOQ	< LOQ		
CBDVA	0.002	0.022	0.22		
CBN	0.003	< LOQ	< LOQ		
CBG	0.0009	0.019	0.19		
CBGA	0.0009	0.84	8.4		
CBC	0.010	0.078	0.78		



### Moisture

Date/Time Extracted: 11/16/21 16:38

Analysis Method/SOP: 103

Moisture: 8.61 %

Action Level: 15%

Potency results are reported on a dry weight basis.

Total THC = delta 9-THC + (THCA \* 0.877)

Total CBD = CBD + (CBDA \* 0.877)

Total CBG = CBG + (CBGA \* 0.878)

LOQ=Limit of Quantification, the lowest measurable concentration of an analyte.



ISO 17025  
ACCREDITED  
LABORATORY

Eric Wendt  
Chief Science Officer - 11/16/2021

These results relate only to the sample included on this report. The report may not be reproduced except in full, without the written permission of Green Leaf Lab.

This is for informational testing and is not compliance testing. Lab results apply to the sample as received.



### Quality Control Potency

Batch: 2147004 - 215-Hemp

Blank(2147004-BLK1)							
Analyte	Result	LOQ	Units	%Recovery Limits	Extracted	Analyzed	Notes
THCA	< LOQ	0.002	%		11/15/21 13:00	11/15/21 21:44	
delta 9-THC	< LOQ	0.002	%		11/15/21 13:00	11/15/21 21:44	
delta 8-THC	< LOQ	0.018	%		11/15/21 13:00	11/15/21 21:44	
THCV	< LOQ	0.020	%		11/15/21 13:00	11/15/21 21:44	
THCVA	< LOQ	0.008	%		11/15/21 13:00	11/15/21 21:44	
CBD	< LOQ	0.002	%		11/15/21 13:00	11/15/21 21:44	
CBDA	< LOQ	0.002	%		11/15/21 13:00	11/15/21 21:44	
CBDV	< LOQ	0.020	%		11/15/21 13:00	11/15/21 21:44	
CBDVA	< LOQ	0.007	%		11/15/21 13:00	11/15/21 21:44	
CBN	< LOQ	0.012	%		11/15/21 13:00	11/15/21 21:44	
CBG	< LOQ	0.003	%		11/15/21 13:00	11/15/21 21:44	
CBGA	< LOQ	0.003	%		11/15/21 13:00	11/15/21 21:44	
CBC	< LOQ	0.036	%		11/15/21 13:00	11/15/21 21:44	

Reference(2147004-SRM1)							
Analyte	% Recovery	LOQ	Units	%Recovery Limits	Extracted	Analyzed	Notes
THCA	98.7	0.0005	%	80-120	11/15/21 13:00	11/15/21 22:06	
delta 9-THC	97.2	0.0005	%	80-120	11/15/21 13:00	11/15/21 22:06	
CBD	97.3	0.0005	%	80-120	11/15/21 13:00	11/15/21 22:06	
CBDA	98.0	0.0005	%	80-120	11/15/21 13:00	11/15/21 22:06	

### Moisture Content

Batch: 2147009 - 103

Reference(2147009-SRM1)							
Analyte	% Recovery	LOQ	Units	%Recovery Limits	Extracted	Analyzed	Notes
Percent Moisture	112		%	80-120	11/16/21 16:38	11/16/21 16:38	

Reference(2147009-SRM2)							
Analyte	% Recovery	LOQ	Units	%Recovery Limits	Extracted	Analyzed	Notes
Percent Moisture	107		%	80-120	11/16/21 16:38	11/16/21 16:38	



Eric Wendt  
Chief Science Officer - 11/16/2021

These results relate only to the sample included on this report. The report may not be reproduced except in full, without the written permission of Green Leaf Lab.

This is for informational testing and is not compliance testing. Lab results apply to the sample as received.



### Notes and Definitions

- ATM Non-cannabis matrix related interference or suppression of Internal standard
- BLI Baseline Interference - Cannabinoid peak interference in chromatographic baseline affecting QC recovery .
- BLK Analyte detected in method blank, but not associated samples.
- BSH Blank Spike High - Blank Spike recovery above method limit. no detections in samples.
- BSL Blank Spike Low - Blank Spike recovery below lower method limit, analyte chromatography reviewed manually for all samples.
- C Interference due to co-elution
- CBD Interference due to co-elution
- CV1 CBD matrix interference on GC Pest chromatography
- CV2 CCV was above acceptance criteria, Non-detect samples are considered acceptable.
- INF CCV was below acceptance criteria, sample still exceeds regulatory limit.
- ISH One or more QC falls outside acceptance criteria. Data entered into LIMS for informational purposes only.
- ISL Internal Standard concentration is above acceptance criteria.
- MSH Internal Standard concentration is below acceptance criteria.
- MSI Matrix Spike High - Matrix Spike recovery above method limits.
- MSL Matrix Spike Interference - Matrix spike source sample contains analyte hit above calibration affecting recovery accuracy in Matrix Spike.
- TPP
- U Matrix Spike Low - Matrix Spike recovery below lower method limit, analyte chromatography reviewed manually for all samples.  
Internal Standard concentration outside control limit due to matrix interference



Eric Wendt  
Chief Science Officer - 11/16/2021

These results relate only to the sample included on this report. The report may not be reproduced except in full, without the written permission of Green Leaf Lab.

This is for informational testing and is not compliance testing. Lab results apply to the sample as received.